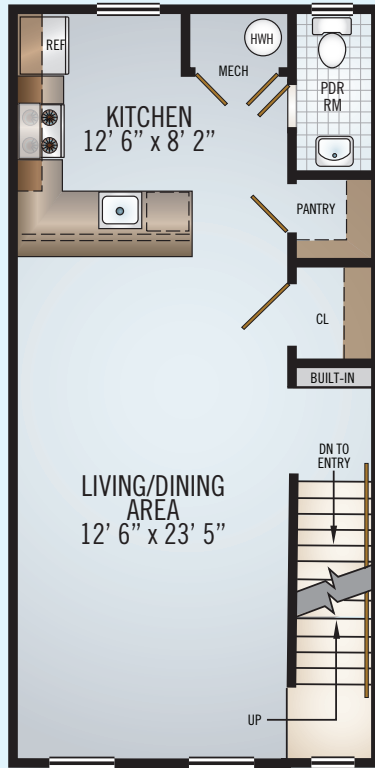
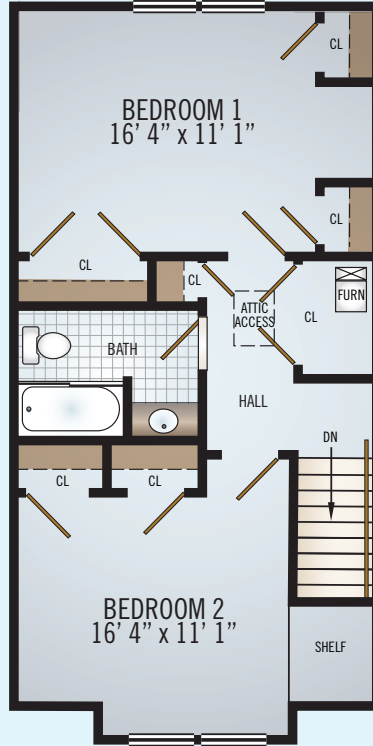


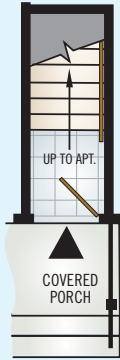
# THE TOTTENHAM



SECOND FLOOR  
**THE TOTTENHAM B**  
 GROUND LEVEL



THIRD FLOOR



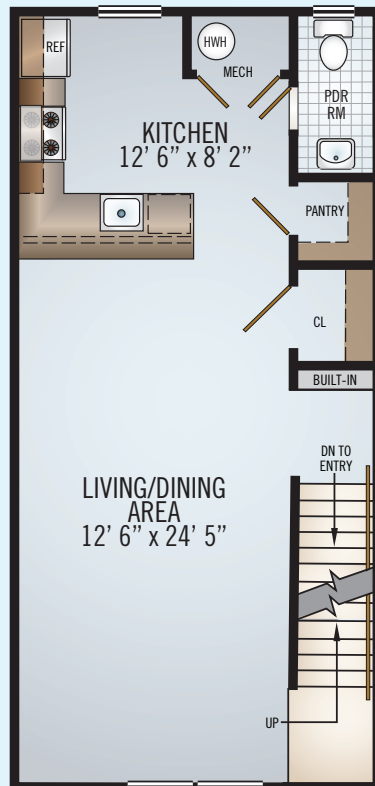
**2 BEDROOM  
 INTERIOR UNIT  
 DUPLEX**  
**B: 1,087 SQ. FT.**  
**C: 1,159 SQ. FT.**

**HIGHLIGHTS:**

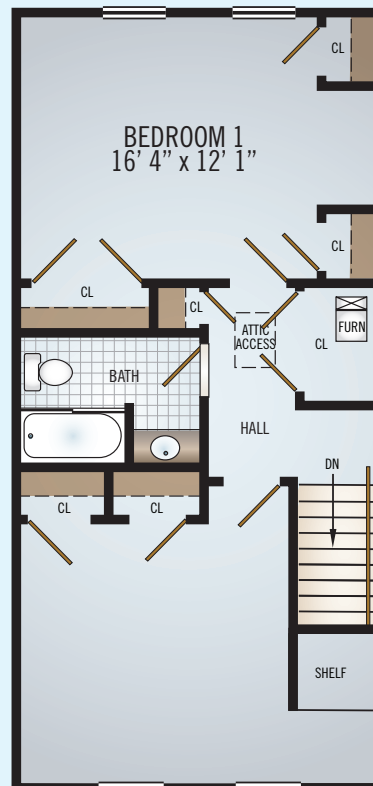
- 2 Bedrooms, 1.5 Baths
- 1 Car Parking Space
- Large Living/Dining Area
- L-shaped Gourmet Kitchen with Range, Microwave, Dishwasher, and Refrigerator
- Bedrooms with Large Walk-in Closets and Loft

**Units:**

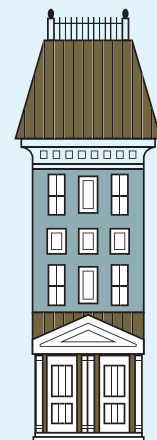
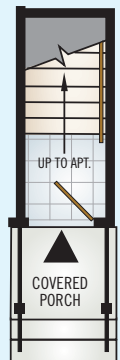
Tottenham B: 5D, 5F  
 Tottenham C: 5E



SECOND FLOOR  
**THE TOTTENHAM C**  
 GROUND LEVEL



THIRD FLOOR



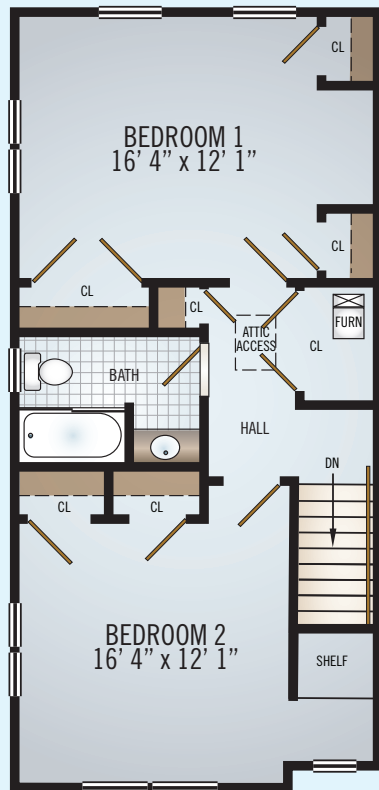
**STATION  
 SQUARE**  
 AT FANWOOD

One Second Street  
 Fanwood, NJ 07023

Email: [Fanwood@AptRentNJ.com](mailto:Fanwood@AptRentNJ.com)  
**AptRentNJ.com**

*Dimensions, drawings and pictures are approximate and/or subject to field variation.*

# THE TOTTENHAM



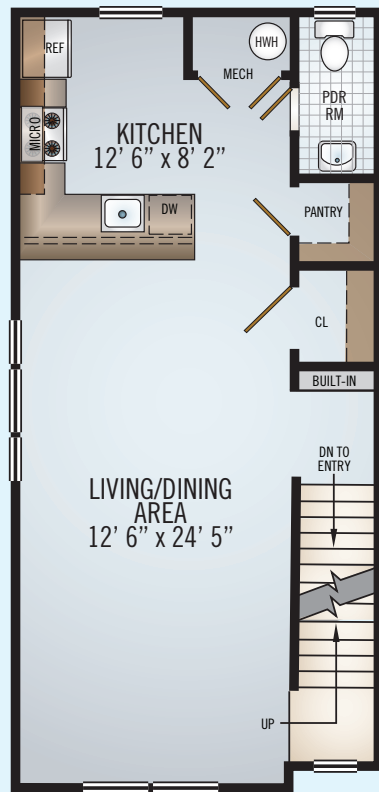
THIRD FLOOR

## 2 BEDROOM END UNIT DUPLEX 1,154 SQ. FT.

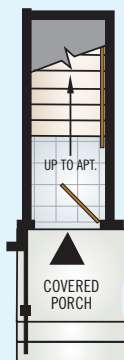
### HIGHLIGHTS:

- 2 Bedrooms, 1.5 Baths
- 1 Car Parking Space
- Large Living/Dining Area
- L-shaped Gourmet Kitchen with Range, Microwave, Dishwasher, and Refrigerator
- Bedrooms with Large Walk-in Closets and Loft

Units:  
Tottenham A: 5C, 5G

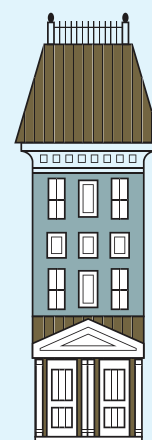


SECOND FLOOR



## THE TOTTENHAM A

GROUND LEVEL



**STATION  
SQUARE**  
AT FANWOOD

One Second Street  
Fanwood, NJ 07023

Email: [Fanwood@AptRentNJ.com](mailto:Fanwood@AptRentNJ.com)

**AptRentNJ.com**

*Dimensions, drawings and pictures are approximate and/or subject to field variation.*